

# Holes and Domes Mirror Installation Instructions

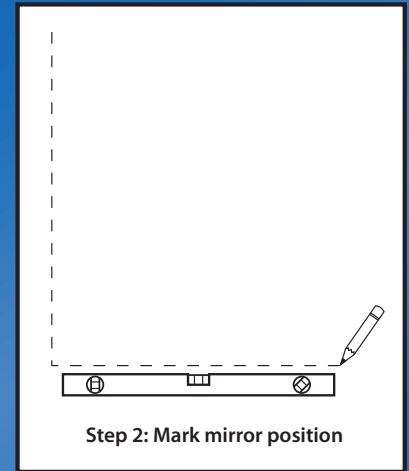
**Before Installation:** Check the wall is straight/level. Installing the mirror on a bowed wall may cause the mirror to crack or break.

## STEP 1

Remove cardboard packaging. Leave plastic corner protection on.

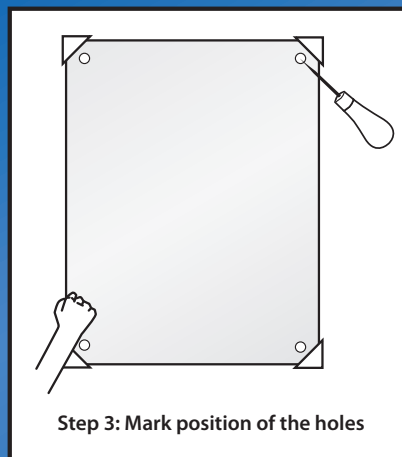
## STEP 2

Use a spirit level and pencil to mark mirror position. Ensure the mirror is at least 150mm minimum up from basin. This will avoid water damage to the mirror edges.



## STEP 3

Hold the mirror in position whilst a second person marks the wall through the centre of the holes (use a nail or bradawl).



## STEP 4

If drilling into gib board (and no wooden stud in behind) insert white wall fixings or use another suitable hollow wall anchor in the exact centre of the mark on the wall.

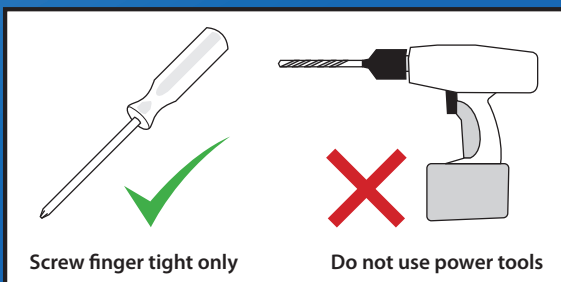
## STEP 5

Fix mirror. Place the mirror carefully into place. Insert black bush in mirror hole before screwing to wall. Screw domes onto black bush. Loosen screw if required to get dome on.

**IMPORTANT:** Do not overscrew as it may cause the mirror corners to crack.

## STEP 6

Clean the mirror using a damp cloth or a neutral mirror cleaner. Many glass cleaners have an acidic base which will attack the silver edges.



**DISCALIMER:** The manufacturer is not responsible for any damage to the goods, property or personal injury whilst being fitted.

*Trendy*  
mirrors